

Productive
scanning in the
office, at home,
and on the move

P-215II

Portable Document Scanner
(with optional WU10 Wi-Fi unit)

you can



imageFORMULA

Canon



imageFORMULA **P-215II**

Your essential partner for high-performance scanning, anywhere

The most productive USB-powered scanner in its class, the P-215II is true plug-and-scan for both Mac and Windows users.



B&W SPEED

15ppm/30ipm



COLOUR SPEED

10ppm/20ipm



DAILY DUTY CYCLE

500 scans/day



AUTOMATIC DOCUMENT FEEDER

20 sheets

Fast, USB-powered scanning

The sophisticated imageFORMULA P-215II offers the fastest USB-powered scanning in its class with duplex speeds of up to 30 images per minute, and can be achieved using just a single USB cable connection. Its 20-sheet Automatic Document Feeder enables fast batch scanning, ideal for executives who need to process signed contracts and close deals.



Space saving and lightweight

The P-215II is extremely stylish with a sleek black and silver design. Its small footprint makes it easy to place on busy desktops, in drawers or use in the home. Weighing approximately 1kg it is the perfect accessory for mobile executives to fit into a briefcase or laptop bag.



Versatile media handling

The P-215II can scan a variety of media ranging from traditional A4 to irregular sized documents and photos. It also features a front facing switch back card slot ideal for scanning plastic ID and embossed cards.



Plug-and-scan convenience with CaptureOnTouch Lite

The P-215II is extremely simple to use – just connect with a USB cable and start scanning! CaptureOnTouch Lite software is built into the P-215II so there is no need to download additional drivers or software, it's simply plug-and-scan.

High quality imaging

High quality imaging is made possible through Canon's proven image processing technology that allows for high resolution scanning up to 600dpi. Image clarity can be further enhanced by colour dropout, moire reduction and advanced text enhancement II – perfect to ensure superb scan quality and ideal for creating searchable PDFs.

Easily create new solutions

Software Development Kits for CaptureOnTouch and CaptureOnTouch Lite make it possible to build applications that integrate directly with the P-215II to create new workflow solutions.

Scan wirelessly to smart devices with the optional Wi-Fi unit WU10 – it's the perfect companion for the P-215II for scanning directly to mobile, tablet and PC devices.



Optional Wi-Fi unit WU10

The Wi-Fi unit WU10 enables wireless scanning to mobile devices without the need to connect via cable to a network point. Businesses can also set-up wireless scanning to desktop PCs with the Wireless Connection Setup Tool and Network Monitor software. The WU10 comes with a rechargeable Lithium-ion battery and when fully charged you can scan up to 400 images. Simply connect via USB to your Canon mobile scanning device and enjoy fast mobile scanning anytime, anywhere.

CaptureOnTouch Mobile App

Scan direct to your iPhone®, iPad® and Android device with the free CaptureOnTouch Mobile App. It comes with advanced image processing tools such as automatic size detection, deskew and skip blank page – giving consistently superior image quality results.

Download the free CaptureOnTouch Mobile App from Google Play (Android user) or the Apple App Store (iOS user).

Software

The P-215II includes ISIS & TWAIN drivers for Windows, and TWAIN drivers for the Mac. These allow easy interaction with your standard imaging application. It also has a full-suite of software applications to help users work more effectively.



Capture OnTouch

Intuitive capture software that makes it quick and simple to achieve premium quality results. CaptureOnTouch incorporates an icon-based user interface with scanning to multiple file formats including PDF, PDF-A, TIFF, JPEG, BMP, PPTX and PNG. CaptureOnTouch can also send captured information directly to data management systems and cloud-based applications (compatible with both Windows and Mac).

Capture OnTouch Lite

Offers unique portability and convenience on the move. The software is built into the P-215II allowing for fast and effortless connectivity without the need to install any drivers or application software (compatible with both Windows and Mac).

Presto! BizCard

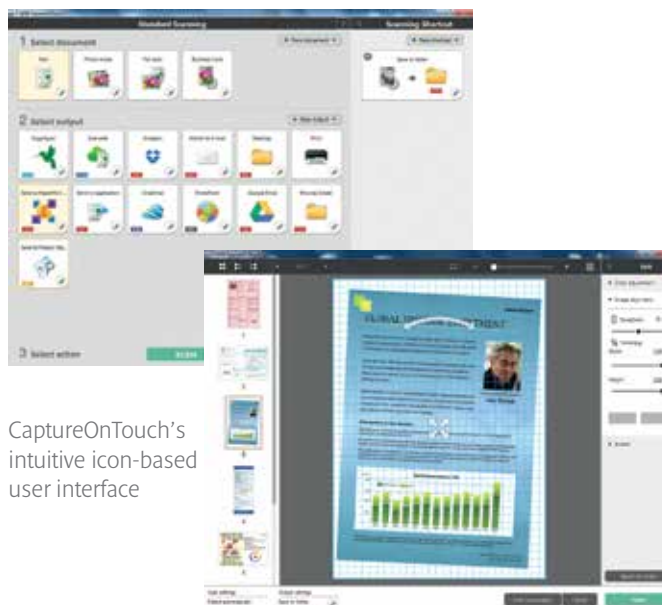
Scan business cards to convert and organise important information into a searchable database (compatible with both Windows and Mac).

PaperPort

This file management application is renowned for being intuitive and user-friendly, making it easy to store, organise and retrieve your digital documents (compatible with Windows only).

Presto! PageManager

Simple but powerful filing software for Mac users that enables you to store, organise and edit your digital documents (compatible with Mac only).



CaptureOnTouch's intuitive icon-based user interface

Specifications for P-215II Personal Document Scanner

Type	Desktop Type Sheet Fed Scanner		
Document Reading Sensor	CMOS CIS 1 Line Sensor		
Optical Resolution	600dpi		
Light Source	RGB LED		
Reading Side	Front / Back / Duplex		
Interface	High Speed USB 2.0 (USB 3.0 bus power also supported)		
Dimensions	Tray Closed: 285 (W) x 95 (D) x 40 (H)mm Tray Opened: 285 (W) x 257 (D) x 202 (H)mm		
Weight	Approx. 1.0kg		
Power Requirements	USB 2.0 bus power: 0.5A (1.0A in combination with power supply USB cable) USB 3.0 bus power: 0.9A Optional AC Adaptor DC6V. 0.8A		
Power Consumption	Scanning: 7.0W (2 x USB 3.0), 4.5W (1 x USB 3.0), Sleep Mode: 1.5W, Power Turned Off: 0.1W		
Operating Environment	10 - 32.5°C (50 - 90.5°F), Humidity: 25 - 80% RH		
Environmental Compliance	RoHS and ENERGY STAR		
READING SPEED¹	P-215II		
(A4, Portrait)		With USB 3.0 / AC Adaptor	USB 2.0
B&W / Greyscale	200dpi / 300dpi	15ppm / 30ipm	12ppm / 14ipm
Colour	200dpi	10ppm / 20ipm	10ppm / 10ipm
	300dpi	6ppm / 12ipm	6ppm / 6ipm
DOCUMENT SPECIFICATIONS			
Width	50.8 - 216mm		
Length	70 - 356mm		
Thickness	52 - 128g/m ² (0.06 - 0.15mm)		
Long Document	Up to 1,000mm		
Card Scanning	54 x 86 x 0.76mm (Embossed card scanning is supported)		
Paper Separation	Separation Pad Method		
Feeder Capacity	20 sheets (64g/m ²)		
OUTPUT			
Resolution	150 x 150dpi, 200 x 200dpi, 300 x 300dpi, 400 x 400dpi, 600 x 600dpi		
Mode	Black & White, Error Diffusion, Advanced Text Enhancement II, 8-Bit Greyscale: (256-Level), 24-Bit Colour, Auto Colour Detection		

SPECIAL FEATURES	Automatic Page Size Detection, Deskew, 3-Dimensional Colour Correction, Colour Dropout (RGB), Auto Colour Detection, Shading Correction, Text Enhancement, MultiStream, Preset Gamma Curve, Scan Panel, Prescan, Image Rotation, Skip Blank Page, Select Scanning Document Side, Scan Area Setting, Text Orientation, Continuous Scanning, Edge Enhancement, Moire Reduction, Prevent Bleed Through / Remove Background, Contrast Adjustment, Colour Drift, Background Smoothing, Shadow Cropping (on / off switchable), Trimming, Corrections suitable for Photo Mode, Auto Resolution Setting	
BUNDLED SOFTWARE	For Windows OS	ISIS / TWAIN Driver (Windows XP Pro / XP Home / VISTA / 7 / 8) CaptureOnTouch ² CaptureOnTouch Lite ² Nuance PaperPort Presto! BizCard Reader Software plug-in to: Evernote, Google Drive™, SharePoint®, SugarSync, Dropbox and OneDrive
	For Mac OS	TWAIN Driver (Mac OS 10.5-10.9 / Supports OS X Lion) CaptureOnTouch ² CaptureOnTouch Lite ² Presto! PageManager Presto! BizCard Reader Software plug-in to: Evernote, Google Drive, SharePoint®, SugarSync and Dropbox
	Options	Silex DS-4000U2 Scan-and-Print Server (convert USB to network interface), AC Adaptor, Carry Case, Optional Wi-Fi Unit WU10
	Consumables	Separation Pad, Feed Roller
	Suggested Daily Duty Cycle	500 scans/day
¹ The scanning speed (via USB) depends on the specification of PC / Mac and the setting of functions		
² Software Developer Kits are available through the Canon Business Solutions Developer Programme - www.canon.europe.com/bsdp		
Some images are simulated for clarity of reproduction. All data is based on Canon's standard testing methods. This leaflet and the specifications of the product have been developed prior to the date of product launch. Final specifications are subject to change without notice.™ and ®; All company and / or product names are trademarks and / or registered trademarks of their respective manufacturers in their markets and / or countries.		

Specifications for Optional Wi-Fi Unit WU10

Type	Optional Wi-Fi and power supply unit
Dimensions: (W x D x H)	125 x 71 x 31.7mm
Weight	Main unit 125g / Battery 44.5g
Interface	USB host for scanner connection IEEE802.11b/g/n
POWER SUPPLY	AC Adaptor or Lithium Ion battery
Scans per Charge: (A4, 200dpi, Colour)	400 images (at full charge)
Power consumption	Maximum power: 12W / Power off mode: 0W

WI-FI SPECIFICATIONS	Access point mode / Station mode
Operation Mode	IEEE802.11b: Max 11Mbps
Data Rate: (Theoretical Values)	IEEE802.11g: 54Mbps
	IEEE802.11n: 300Mbps
Frequency	2.4GHz
Wi-Fi Security	WPA-PSK (TKIP / AES) WPA2-PSK (TKIP / AES) WEP (64 / 128bit) WPS (Wi-Fi Protected set-up) Supported
BUNDLED SOFTWARE	Canon Wireless Connection Setup Tool, Network Monitor
For Mac and Windows	Mobile apps available for Android and Apple iOS
Mobile OS Support	



Partner Programme



Canon Electronics Inc
canon.com

Canon Europe
canon-europe.com

English Edition
© Canon Europa N.V., 2014

Canon Europe Ltd
3 The Square
Stockley Park
Uxbridge
Middlesex
UB11 1ET
United Kingdom