

# Universal Login Manager

imageRUNNER ADVANCE  
login solution



you can



**Canon**



## Advanced login solution

Canon introduces the Universal Login Manager on the imageRUNNER ADVANCE range: an all-in-one solution providing convenient user authentication for device access control, advanced personal productivity and usage tracking for small business environments.

### Why login to your imageRUNNER ADVANCE?

**Q** Is your workgroup multifunctional device used to process vital business and customer information and shared among multiple users in the office?

**Q** What are the implications of unauthorised individuals gaining access to your device and information?

**Q** How many of your document processes around the multifunctional device are user specific and repetitive so could be automated for the user to be more efficient?

**Q** Do you know how each of your staff uses the print facilities and the costs involved? How much control do you have over print behaviour?

# Meet the **Universal Login Manager**

## Server-less Login Solution

The Universal Login Manager is a unique server-less application for user authentication on the imageRUNNER ADVANCE range, which provides greater security and control over your device or small fleet, without compromising on matters such as convenience and user productivity. The solution does not require investment in additional servers, and has simple set up process, which ensures maximum benefit with minimum effort.

### Customisable Login Screen

The login screen of the imageRUNNER ADVANCE is highly customisable. Your company logo, background, colours or other specific information can be shown on the login screen, ensuring the device blends perfectly with your company culture and image.



## Greater Usability with a Flexible Choice of Login Types

A choice of login types is available through the Universal Login Manager to protect your device against unauthorised access and increase security at your desired level of convenience.

### Proximity Card Login (with optional PIN)

Proximity card login provides quick and easy access to the device for authorised users. All it takes is a swipe of the card over the card reader, and because a variety of proximity cards is supported, you can reuse your existing building access cards to login to your imageRUNNER ADVANCE as well.

### Image Login (with optional PIN)

A picture button on the device screen can be assigned to each user account. A number of built-in images is available to choose from, and users can further personalise their account button by uploading their own image of preference. Login to the device is done conveniently by touching the button with the image corresponding to their account. Optional PIN code can also be set to protect from unauthorised access. Login, which requires input of user name and password can be set as well.

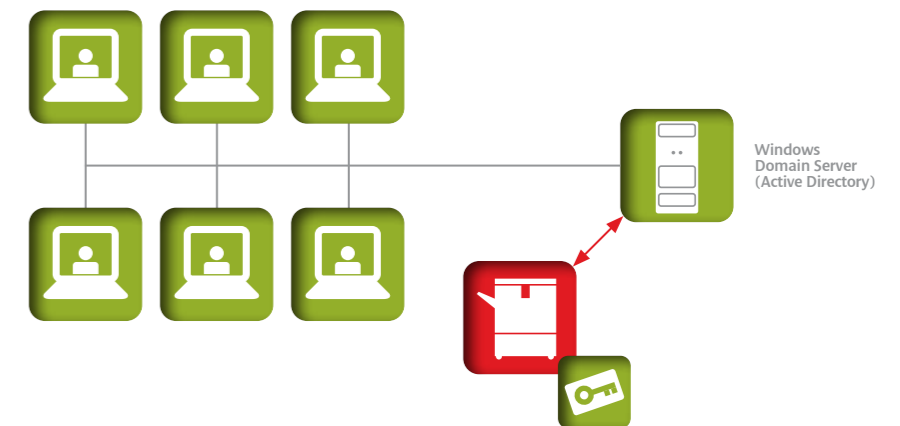
## Authentication Modes

The Universal Login Manager supports local device authentication, where the administrator creates user accounts and sets permissions by accessing the device controls via a web browser on a PC. User account data is stored on the imageRUNNER ADVANCE, and can be exported and replicated on other devices.

Businesses with more complex network infrastructure are also able to integrate the login solution with the existing company directory service such as Active Directory on Windows Server. In this way, the network login credentials can be used to login to the imageRUNNER ADVANCE device, reducing administration burden for maintaining device user data.

Universal Login Manager can be easily upgraded to a full uniFLOW solution to meet your evolving requirements.

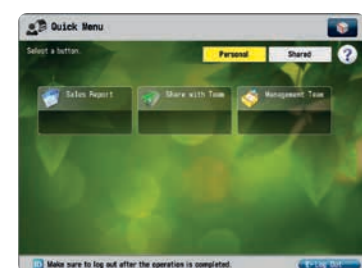
Seamless integration into your network reduces administration workload.





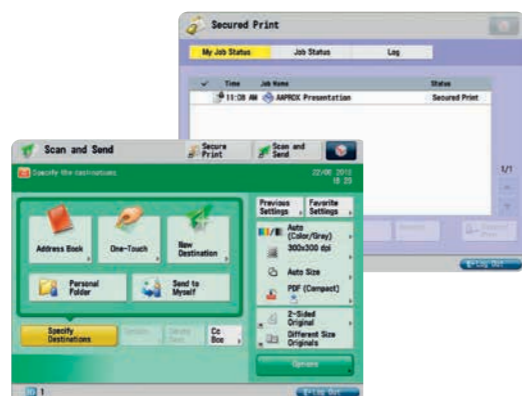
### Enhance User Productivity

The simple login process provides greater security without impacting productivity and convenience for the office users. Once logged in, users are presented with a workspace that can be personalised and fine-tuned to support the individual's working practices, saving time and effort.



#### Personal workflows

Common tasks, such as scanning into business applications or sending to group e-mails can be recorded as one-touch buttons to show on the quick menu. This enables immediate access to those repetitive tasks and subsequent execution of entire workflows by pressing a single button.



#### Greater convenience

Scanned documents can be sent to the logged in user's e-mail or network folder with a standard one-touch button, while personal secured print jobs are conveniently separated from other user's jobs and can be easily retrieved from the "My job status" tab.

#### Quick Link to Applications

The imageRUNNER ADVANCE is also an access point for a variety of external services such as Google Drive, which require separate user name and password entry. For improved user experience and efficiency, individual's login credentials for those external services can be linked to the device login, freeing users from the hassle to input login details every time.

### Control Access

The Universal Login Manager secures your imageRUNNER ADVANCE against unauthorised access and usage, protecting your investment and information.

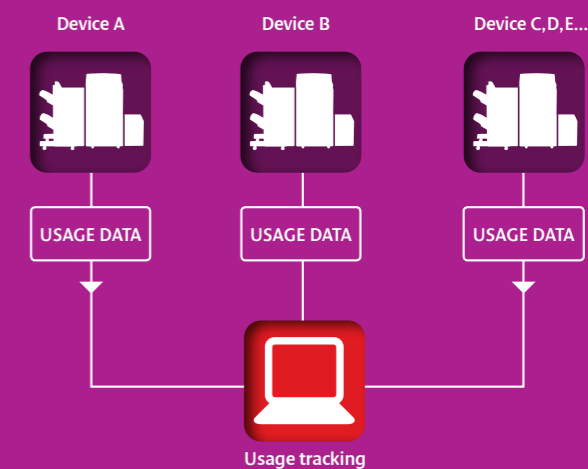
Tight integration with the Access Management System on imageRUNNER ADVANCE enables detailed management of access to device functionality per user with different permission levels. Login can be implemented at device level or at function level, and access to device functionalities such as scanning, sending or copying/printing in colour can be restricted to enhance security or control output costs.

### Track Device Usage

The Universal Login Manager gives you visibility of usage patterns per device and user through reporting, so you can identify areas where potential savings can be realised.

Administrators can collect basic usage statistics (print/copy/scan activity) from one or more devices. Data can be consolidated and visualised in a number of standard reports.

The cost for each transaction per device can be maintained in simple table provided by the Universal Login Manager.



Collect basic usage statistics from your imageRUNNER ADVANCE to generate reports per user or device.

# Specifications: Universal Login Manager

<b>Application name</b>	Universal Login Manager		
<b>Type</b>	Server-less, MEAP-based		
<b>Supported devices</b>	iR-ADV C2020i/L, C2025i, C2030i/L, C2220i/L, C2225i, C2230i iR-ADV C5030i, C5035i, C5045i, C5051i, C5235i, C5240i, C5250i, C5255i/i iR-ADV C7055i, C7065i, C7260i, C7270i, C7280i iR-ADV C9060 PRO, C9070 PRO, C9280 PRO iR-ADV 4025i, 4035i, 4045i, 4051i iR-ADV 6055i, 6065i, 6075i, 6255i, 6265i, 6275i iR-ADV 8085 PRO, 8095 PRO, 8105 PRO, 8285 PRO, 8295 PRO, 8205 PRO		
<b>Required components</b>	Universal Login Manager MEAP Application (Device installation) Universal Login Manager Usage Tracker (RIA plug-in for web browser) Access Management System Access Management System Printer Driver Add-in Module (Ver 3.1.0 or later) (printer driver installation)		
<b>Access Management System availability</b>	Standard on: iR-ADV C2220i/L, C2225i, C2230i, C5235i, C5240i, C5250i, C5255i/i, C7260i, C7270i, C7280i, C9280 PRO, 6255i, 6265i, 6275i, 8285 PRO, 8295 PRO, 8205 PRO Optional on: (requires AMS Kit-B1) iR-ADV C2020i/L, C2025i, C2030i/L, C5030i, C5035i, C5045i, C5051i, C7055i, C7065i, C9060 PRO, C9070 PRO, 4025i, 4035i, 4045i, 4051i, 6055i, 6065i, 6075i, 8085 PRO, 8095 PRO, 8105 PRO		
<b>Supported Windows Server OS/ Directory service</b>	Active Directory running on Windows 2003 or 2008 server		
<b>Supported Browsers</b>	Internet Explorer, Opera, Chrome, Mozilla Firefox		
<b>Printer Driver support (for AMS add-in module)</b>	UFR II Printer Driver: V20.60 or later PCL 6 Printer Driver: V20.60 or later PCL 5e/5c Printer Driver: V20.60 or later PS 3 Printer Driver: V20.60 or later		
<b>Login Types</b>	Image Login (up to 48 users) Image Login + PIN code (up to 48 users) Proximity Card Login Proximity Card Login + PIN Username/Password Login		
<b>Authentication Modes</b>	Local Authentication (user database on the device) Active Directory on Windows Server uniFLOW Server (full LDAP support)		
<b>Compatibility login types/ authentication modes</b>			
	Image Login Image Login + PIN	Proximity Card Login Proximity Card Login + PIN	Username/ Password Login
Local	Yes	Yes	Yes
Active Directory		Yes	Yes
uniFLOW Server		Yes	Yes

<b>Optional items</b>	MiCard PLUS Proximity Card reader (required for Proximity Card Login) USB Device Port: (recommended for MiCard PLUS card reader) Proximity cards: HID Card 10 Pac, MiFare Card 10 Pack
<b>USB Device port compatibility</b>	USB Device Port-E1: iR-ADV C2220i/L, C2225i, C2230i, C5235i, C5240i, C5250i, C5255i/i USB Device Port-B1: iR-ADV C5030i, C5035i, C5045i, C5051i/i USB Device Port-C1: iR-ADV C2020i/L, C2025i, C2030i/L USB Device Port-D1: iR-ADV 4025i, 4035i, 4045i, 4051i *USB Device Port is standard on iR-ADV 6055i, 6065i, 6075i, 6255i, 6265i, 6275i, C7055i, C7065i, C7260i, C7270i, C7280i, C9060 PRO, C9070 PRO, C9280 PRO, 8085 PRO, 8095 PRO, 8105 PRO, 8285 PRO, 8295 PRO, 8205 PRO and is therefore not required as an optional item.
<b>Supported Card Types</b>	Default card type: HID Prox, MiFare CSN Supported through configuration: 13.56 MHz: HID iCLASS CSN, ISO 14443A CSN, Advant CSN (Legic), DESFire CSN, I-tag CSN (IBM), MiFare Ultralight CSN (Philips, NXP), ISO 15693 CSN, etag CSN (Secura Key), I-Code CSN (Philips, NXP), my-d CSN (Infineon), Tag-it CSN (Texas Instruments), RDR-758x Equivalent (iClass, ISO14443A, ISO15693A) CSN; 125 KHz: Auid, Cardax UID, Russwin UID, CASH-RUSCO (GE Security, UTC), CDVI, Paradox, Deister UID, Dimpna UID, DIGITAG, EM 410x, Rosslare, EM 410x Alternate, GProx-II UID, HiTag 1 & 5 Alternate, HiTag 1 & 5, HiTag 2 Alternate, HiTag 2, Indala ASP 26 bit (Motorola), Indala ASP UID (Motorola), Indala ASP Custom, Indala ASP+ UID (Motorola), Indala ASP+ Custom, Indala ECR Custom, ioProx (Kantech), Keri NXT UID, Farpointe Data (Pyramid) PSC-1 26 Bit, Keri PSC-1 26 Bit, Pyramid (Farpointe Data) PSC-1 26 Bit, Keri UID, NexKey, QuadraKey, KeyMate, 2Smart Key (Honeywell), Nexwatch (Honeywell), Radio Key (Secura Key -02), ReadyKey Pro UID, Secura Key -01;
<b>Proximity card association to user accounts</b>	Self-registration process at initial user login (Card training method)
<b>Login screen background image size and format</b>	PNG, JPG, GIF format; Recommended size: 800 x 558 pixels or 600 x 442 pixels
<b>Uploadable user image size and format</b>	PNG, JPG, GIF format; Recommended size: 70 x 70 pixels
<b>Usage Tracking</b>	Max. 10 devices
<b>Report availability</b>	Activity per device/user; Summary per device/user
<b>Report Format</b>	HTML/CSV
<b>Job log data for tracking</b>	Up to 5,000 entries
<b>Standard disclaimers</b>	All specifications subject to change without notice



Canon Inc.  
canon.com

Canon Europe  
canon-europe.com

English  
© Canon Europa N.V., 2012